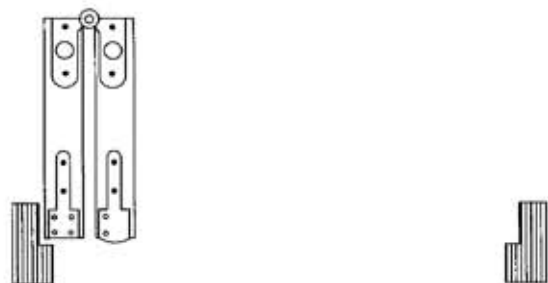
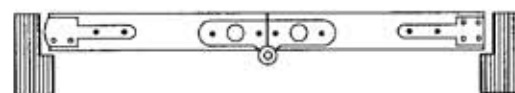
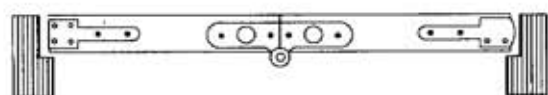


# SCHEMA DI APERTURE PER PORTE TIPO B

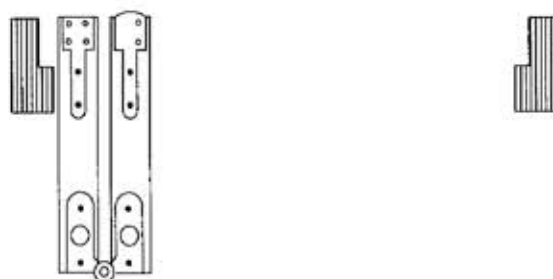
## SX A SPINGERE



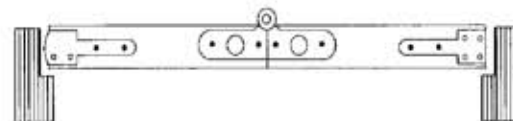
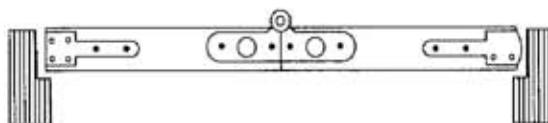
## DX A SPINGERE



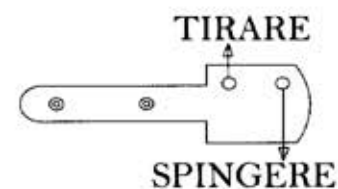
## SX A TIRARE



## DX A TIRARE

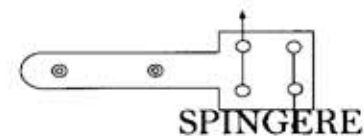


## PIASTRINA CARRUCOLA

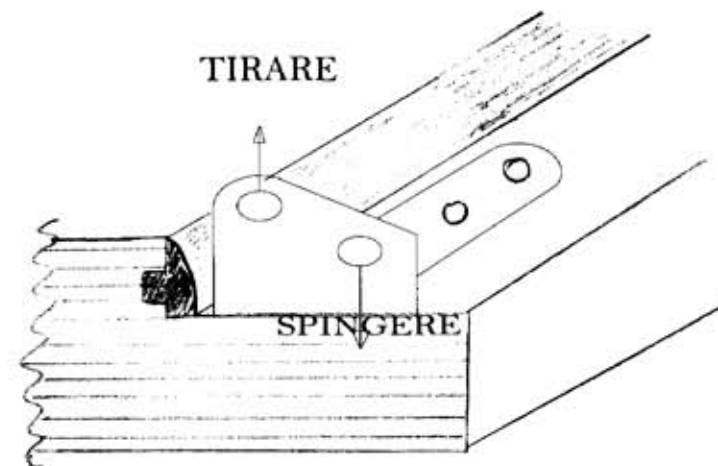


## PIASTRINA PORTA

### TIRARE



## PIASTRINA STIPITI



**SE SI MONTA LA PORTA A TIRARE**, QUESTA PIASTRINA DI PLASTICA NERA CHE SI TROVA SOTTO LA CERNIERA GROSSA SUPERIORE CHE TIENE GUIDATA L'ASTA DELLA SERRATURA, VA TOLTA E GIRATA SOTTOSOPRA IN MODO CHE L'INCAVO SI TROVI OPPOSTO A COME ERA MONTATO. QUESTA OPERAZIONE SERVE PER CENTRARE L'ASTA RISPETTO AL BINARIO.

